

4K UHD Camera Head

4K Surgical Image

The Fujifilm 4K camera provides an exceptional 4K image for enhanced clarity during the most demanding of cases.

In addition to image quality, the Fujifilm HD Video Processor has multi-camera connectivity; optimized camera presets for specific specialties, such as laparoscopy, arthroscopy, gynecology; and a simple-to-use USB port for exporting images captured during cases.



PRODUCT FEATURES

Outstanding performance

- 4K UHD imaging (3840 x 2160, 50 / 60p)
- BT2020, large UHD color space

Image / video capturing via USB (Full HD)

Multi-connectivity

- 4K UHD: camera head 4K UHD zoom
- Full HD: camera head full HD zoom, camera head full HD fi x focal length, camera head full HD 90° angled, camera handpiece pen-shapes

Video algorithms – with Picture out of Picture mode (POP)

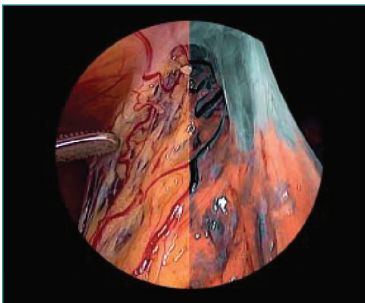
- Color Shift 1 + 2 – spectral colors can be shifted and exchanged in order to enhance vessels and tissue structures
- Selective Color Enhancement (SCE) – for a much improved representation of the vessels and the tissue structure
- Smoke reduction – for a better view during dissection technologies (e.g. HF)
- Grid removal – reduces the honeycomb structure of image bundle endoscopes
- FUJIFILM MIS-Bus interface for automatic and manual light source control via camera head.

SPECIFICATIONS


DESCRIPTION	PRODUCT CODE
4K UHD USB Image / Video Capture	95-3980
TECHNICAL DATA	
Operation control panel	On-Off, menu, white balance, photo, video
Video outputs 4K-UHD	4 x 3G-SDI (3840 x 2160, 50 / 60p)
Video outputs	HD 2 x 3G-SDI, 2 x DVI (1080p)
Remote outputs	2 x 3.5 mm (to connect recording / printer devices)
Remote inputs	2 x 3.5 mm (to connect a foot control switch) 2 x USB (1 x for image and video capture, 1 x keyboard)
Connectivity	FUJIFILM MIS-Bus interface
Standard compliance	IEC 60601-1 (3.1 edition)
Electromagnetic compatibility	IEC/EN 60601-1-2 (4th)
Directive compliance	CE-mark
Dimensions	295 x 130 x 355 mm (W x H x D)
Weight	6.6 kg
Supply voltage	100 - 240 V~, 50/60 Hz
Power consumption	0.8 - 0.4 A
Protection class acc. to IEC	60601-1 Protection class 1
Degree of protection	IP21
Classification acc. To Directive 93/42/EEC	Class 1 medical device
Classification as per IEC/CISPR 11	Group 1 Class B

PLEASE SEE ADDITIONAL DATA SHEETS
FUJIFILM 4K UHD Camera Head | FUJIFILM HIGH POWER 300 LED Light Source


DETAILS



A perfect match for perfect colors




AUTO



BT2020

Large camera color space BT2020

&



CRI >90

High CRI Ra >90

Video algorithms (e.g. Color Shift1) , Automatic light control, FUJIFILM 4K camera with FUJIFILM high power 300 LED light source