

Introducing the EC-760Z-V/L Zoom Colonoscope with Optical Magnification

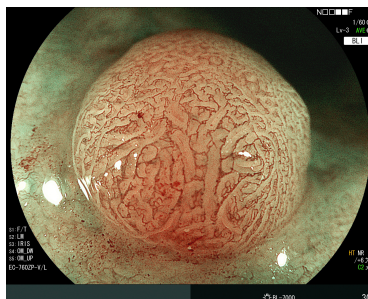
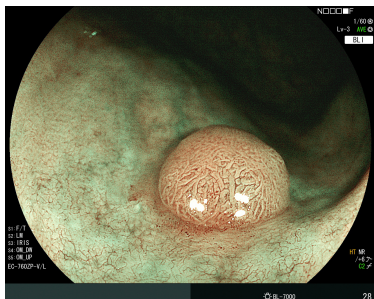


Fujifilm is expanding its line of ELUXEO® 700 Series endoscopes with the release of the EC-760Z-V/L Zoom Colonoscope featuring optical magnification. With an optical zoom range of up to 135x and observation range of 1.5 - 100mm¹, this colonoscope brings visualization to a new level. The insertion tube diameter of 12.8mm provides a stiffer feel, allowing stability while maneuvering throughout the colon. The large instrument channel of 3.8mm allows the passage of various devices, including jumbo forceps, during procedures like polypectomies.

The EC-760Z-V/L also features a flexibility adjustment mechanism, adaptive bending, and advanced force transmission capabilities to improve insertion and navigation while examining challenging anatomy. Like all Fujifilm 700 Series colonoscopes, the EC-760Z-V/L is equipped with Linked Color Imaging (LCI®) and Blue Light Imaging (BLI) light mode options for enhanced detection and characterization of lesions and adenomas.

HIGHLIGHTED FEATURES

- Optical zoom range of up to 135x and an observation range of 1.5 - 100mm¹
- Stable insertion tube with a flexibility adjustment mechanism, adaptive bending, and advanced force transmission for improved access and scope maneuverability in challenging anatomy
- A water jet and a large working channel of 3.8mm in a 12.8mm outer diameter design
- Ergonomic G7 control portion designed for ease of movement to help reduce fatigue
- CMOS imaging technology enabling superior visualization
- LCI and BLI light mode options for enhanced detection and characterization
- Compatibility with ELUXEO light source and processor system featuring 1-step connection, innovative 4-LED multi-light illumination technology for high quality images, videos displayed in full HD, and with an extended LED life expectancy of up to six years²



¹ When used with a 19 inch LCD monitor.

² Based on OEM manufacturers and Fujifilm evaluation.

PRODUCT SPECIFICATIONS

Category	Specification
Optical Zoom Range	Up to 135x
Field of View	Normal: 140° Close: 56°
Viewing Direction	0° (Forward)
Observation Range	1.5 ~ 100mm ¹ Normal: 3 ~ 100mm Close: 1.5 ~ 2.5mm ¹
Bending Capability	Up: 180° Down: 180° Right: 160° Left: 160°
Working Length	1,690mm
Total Length	2,010mm
Distal End Diameter	12.8mm
Insertion Tube Diameter	12.8mm
Minimum Instrument Channel Diameter	3.8mm
Image Type	CMOS
Flexibility Adjustment	Yes