

G-EYE®

700 Series Colonoscopes



manufactured by
smart
medical systems



G-EYE® 700 Series Colonoscopes

G-EYE® 700 Series Colonoscopes are an innovative technology developed by Smart Medical Systems Ltd., and distributed in the U.S. by Fujifilm, further expanding Fujifilm's broad portfolio of colonoscopy offerings. G-EYE® 700 Series Colonoscopes are designed to assist with visualization, stabilization, and control during colonoscopy.

G-EYE® 700 Series Colonoscopes are equipped with an integrated balloon at the bending section of a Fujifilm 700 Series Colonoscope that can be reused and reprocessed. The G-EYE® Colonoscope is inserted by traditional technique with the balloon deflated. The maneuverability of Fujifilm's 700 Series Colonoscope is uncompromised, allowing for smooth and controlled insertion and withdrawal.

In published clinical studies, G-EYE® colonoscopy demonstrated a significant increase in adenoma detection yield over standard colonoscopy.^{1,2}

Inflation of the G-EYE® balloon is controlled by the SPARKC™ inflation system. With one click, the balloon can be inflated to a regulated pre-set pressure level for Controlled Withdrawal™. Withdrawal of the colonoscope with the balloon moderately inflated:

- unfolds and flattens the colonic surface
- centralizes optics within the colon lumen
- reduces bowel slippage
- assists in controlling the colonoscope's field of view and positioning

For added stability during endoscopic resection or other treatment, the G-EYE® 700 Series colonoscope balloon can be inflated to a separate anchoring pressure utilizing the SPARKC hand held remote. Balloon pressure can also be reduced and quickly deflated upon completion of the exam – all at the touch of a button.

G-EYE® 700 Series Colonoscopes are compatible with Fujifilm's ELUXEO® Endoscopic Imaging System.



¹ Clinical Evidence: Shirin, H. et al. G-EYE® colonoscopy is superior to standard colonoscopy for increasing adenoma detection rate: an international randomized controlled trial (September 2018 Gastrointestinal Endoscopy 89(3) DOI: 10.1016/j.gie.2018.09.028)

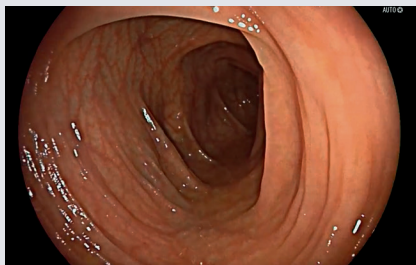
² Halpern, Z. et al. Comparison of adenoma detection and miss rates between a novel balloon colonoscope and standard colonoscopy: a randomized tandem study (Endoscopy 2015; 47(03): 238-244 DOI: 10.1055/s-0034-1391437)



Key Benefits of Using G-EYE® 700 Series Colonoscope Technology

Adding value throughout the procedure.

Visualization



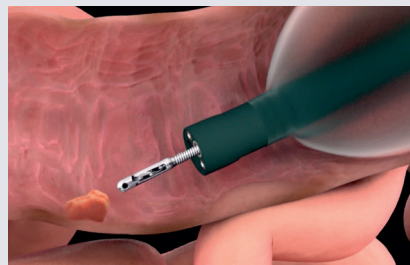
G-EYE® 700 Series Colonoscopes flatten topography and maintain centralized optics to assist visualization

Control



G-EYE® 700 Series Colonoscopes reduce bowel slippage and provide stability throughout withdrawal

Treatment



G-EYE® 700 Series Colonoscope balloon assists in stabilizing the colonoscope during treatment

ELUXEO®

Fujifilm ELUXEO® Endoscopic Imaging System

The Fujifilm ELUXEO Endoscopic Imaging System utilizes unique 4-LED multi-light technology to achieve optimal results in illumination. ELUXEO also features Linked Color Imaging (LCI®) – designed to enhance mucosal visualization to aid in detection of lesions and enable more accurate delineation – and Blue Light Imaging (BLI) which allows for high contrast imaging of microvessels.





G-EYE® 700 Series Colonoscope Specifications

G-EYE® 700 Series Colonoscopes are based on respective Fujifilm 700 Series Colonoscopes, and include the following models:

Specification	G-EYE 760P-V/L	G-EYE 760R-V/L	G-EYE 760S-V/L
	Slim	Hybrid	Adult
Field of view	170°		
Observation range	2 – 100mm		
Bending capability	Up 180°/Down 180° Right 160°/Left 160°		
Distal end diameter	11.1mm	12.0mm	12.8mm
Insertion tube diameter	11.5mm	12.0mm	12.8mm
Working channel diameter	3.2mm	3.8mm	3.8mm
Working length	1,690mm		
Total length	2,010mm		
Inflated balloon diameter	Up to 60mm		
Compatible processor	ELUXEO™ VP-7000		
Compatible light source	ELUXEO™ BL-7000		

SPARKC™ Inflation System Specifications

Permanent leak testing ensures full colonoscope integrity throughout the procedure.

Specification	Value
SPARKC™ Power Supply	100V – 240V AC; 50-60Hz
Controlled Withdrawal™ Pressure	3 intermediate pressure levels
Inflated balloon set pressure	Up to 70mbar (7kPa)
Inflation/Deflation controls	Hand Held Remote Foot Pedal

For more information, contact your Fujifilm representative today, or call 1.800.385.4666. www.fujifilmendoscopy.com