

LCI's IMPACT ON COLONIC POLYPS

Physician: Jose Lantin, MD
Title: CEO
Facility: Gastroenterology of Westchester, LLC Yonkers, NY



Patient Indication

This patient had a history of colonic polyps associated with a change in bowel habits.

Case Summary

During the colonoscopy, a flat polyp with an irregular border was discovered when examined with White Light Imaging (see Image 1). Using Linked Color Imaging (LCI), the exact border of the polyp was identified (see Image 2). With LCI, I was able to visualize the real size of the polyp – it was bigger than originally perceived with White Light.

Snare polypectomy was performed and following resection, the area was checked to ensure completeness (see Images 3 & 4). The enhanced color differentiation provided by LCI confirmed the polyp was removed in its entirety.

Conclusions

During initial detection, a polyp that looks subtle under white light can have a defined shape under LCI. Additionally, LCI's technology allows the completeness of a polypectomy to be better visualized, understood and documented.



Image 1:
Flat Polyp under White Light Imaging

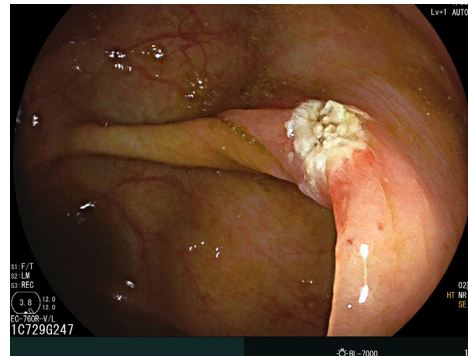


Image 3:
Resected Area under White Light Imaging



Image 2:
Flat Polyp under LCI

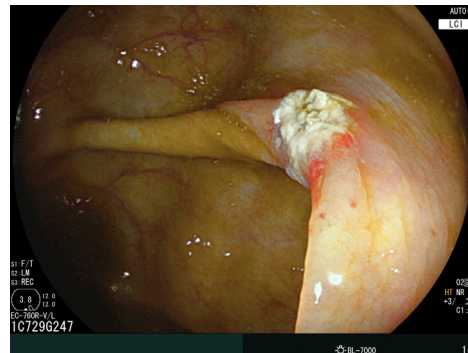


Image 4:
Resected Area under LCI