

4K UHD Camera

4K Surgical Image

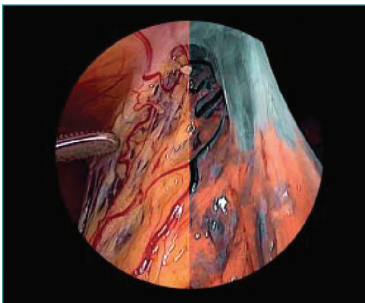


SPECIFICATIONS


| DESCRIPTION | PRODUCT CODE |
|--|--|
| 4K UHD USB Image / Video Capture | 95-3980 |
| TECHNICAL DATA | |
| Operation control panel | On-Off, menu, white balance, photo, video |
| Video outputs 4K-UHD | 4 x 3G-SDI (3840 x 2160, 50 / 60p) |
| Video outputs | HD 2 x 3G-SDI, 2 x DVI (1080p) |
| Remote outputs | 2 x 3.5 mm (to connect recording / printer devices) |
| Remote inputs | 2 x 3.5 mm (to connect a foot control switch) 2 x USB (1 x for image and video capture, 1 x keyboard) |
| Connectivity | FUJIFILM MIS-Bus interface |
| Standard compliance | IEC 60601-1 (3.1 edition) |
| Electromagnetic compatibility | IEC/EN 60601-1-2 (4th) |
| Directive compliance | CE-mark |
| Dimensions | 295 x 130 x 355 mm (W x H x D) |
| Weight | 6.6 kg |
| Supply voltage | 100 - 240 V~, 50/60 Hz |
| Power consumption | 0.8 - 0.4 A |
| Protection class acc. to IEC | 60601-1 Protection class 1 |
| Degree of protection | IP21 |
| Classification acc. To Directive 93/42/EEC | Class 1 medical device |
| Classification as per IEC/CISPR 11 | Group 1 Class B |



PLEASE SEE ADDITIONAL DATA SHEETS
FUJIFILM 4K UHD Camera | FUJIFILM HIGH POWER 300 LED Light Source

DETAILS



A perfect match for perfect colors

 **AUTO**

 & 

Large camera color space BT2020 High CRI Ra >90

Video algorithms (e.g. Color Shift1) , Automatic light control, FUJIFILM 4K camera with FUJIFILM high power 300 LED light source